

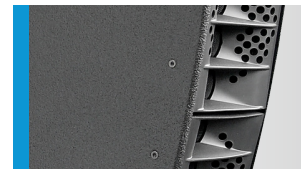
# Digitally Powered Cylindric Wave Radiator **GL 24j dp**



Active High-performance line array system for optimised speech and music reproduction in acoustically challenging rooms. The precise, broadband sound bundling to a nominal 50° vertical dispersion is achieved through the acoustic coupling of two slightly curved line arrays, arranged one behind the other within the cabinet. This innovative arrangement is complemented by the horn guide in the high frequency range to ensure an exceptionally homogeneous and symmetrical 100° horizontal dispersion. GL 24j systems are particularly suitable for use as a single element in situations in which the loudspeaker has to be flown at a great height, and can be combined with other GL systems to cater for a wide range of applications. The integrated digital amplifier technology provides 2 x 800 Watt and DSP control.

## PRODUCT SPECIFICATIONS

<b>Speaker Components</b>	6 x 6,5" Nd / 24 x 1" Nd Tweeter
<b>Description</b>	Digitally Powered Cylindric Wave Radiator
<b>Amp Power</b>	2 x 800 W AES biamped / 110-230 V
<b>Rated Current</b>	1,8 A @ 230 V
<b>SPL</b> <small>Peak @ 1 m</small>	> 130 dB
<b>Max. Input Signal</b>	25 dBu
<b>DSP</b>	HDLM FPGA Processing 32 bit floating point
<b>AD / DA</b>	24 bit / 96 kHz
<b>Latency</b>	0,8 ms (analog in to analog out)
<b>Usable Range</b>	80 Hz - 20 kHz (-6 dB)
<b>Tuning Frequency</b> <small>excursion minimum</small>	90 Hz
<b>X-Overpoint</b> <small>acoustical</small>	Depends on preset
<b>Coverage</b> <small>horizontal / vertical</small>	100° x 50° (j-curved)
<b>Mechanical Splay Angle</b>	43°
<b>Connectors</b>	Neutrik XLR in/out Neutrik PowerCon in/out Neutrik Speakon NL4MP out
<b>Handles</b>	2 x
<b>Rigging / Fittings</b>	9 x M10
<b>Weight</b>	22 kg
<b>Size</b> <small>height x width x depth</small>	100,6 x 18,9 x 52,0 (24,5) cm
<b>Order No.</b>	<b>00520/j/dp</b>

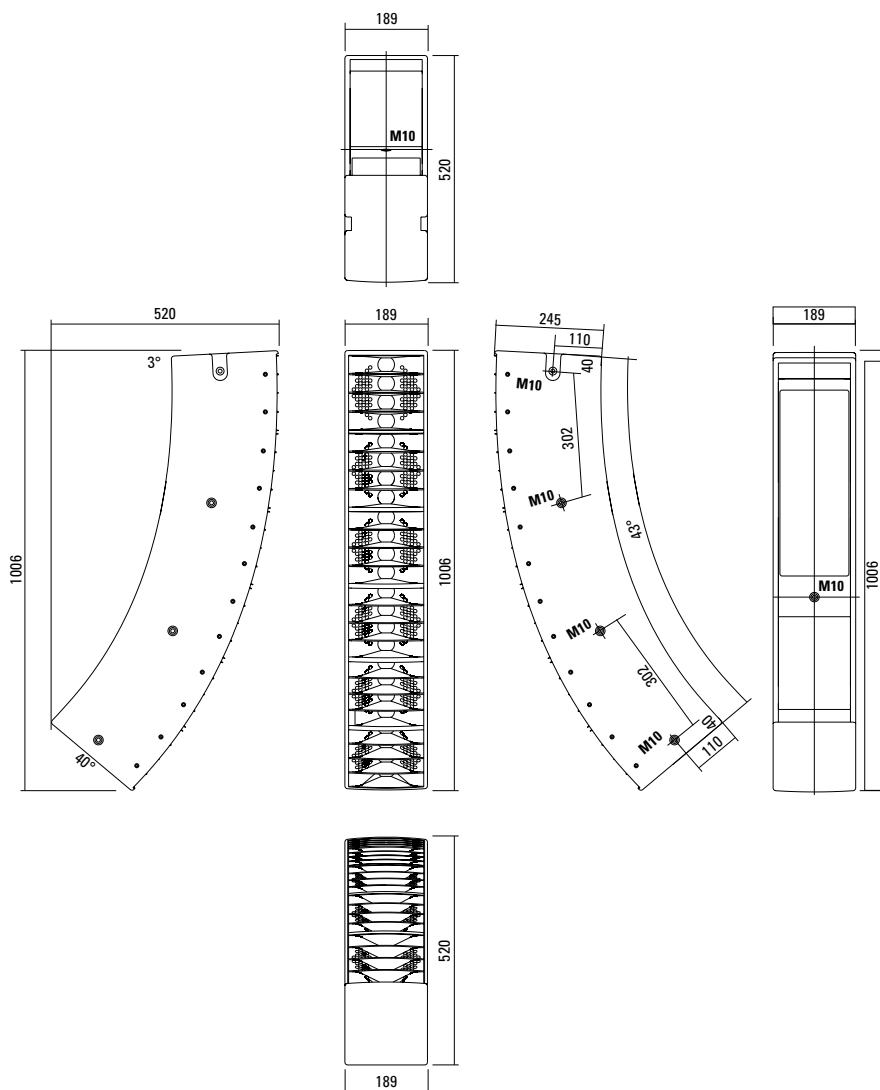


Integrated fittings for easy connection.



Connection panel.

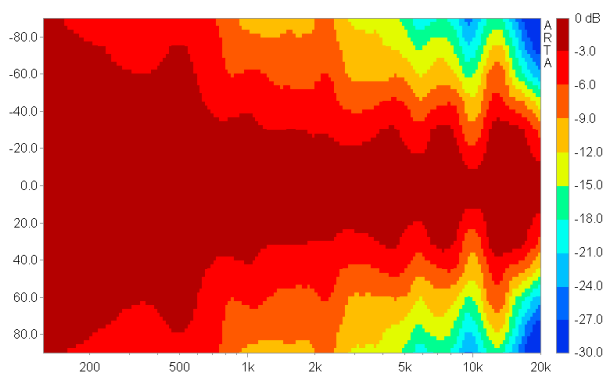
## DIMENSIONS



## COVERAGE PATTERNS

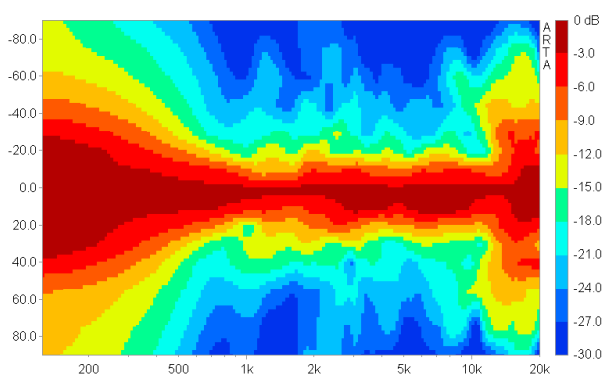
### GL 24 j horizontal - 2D Directivity Plot

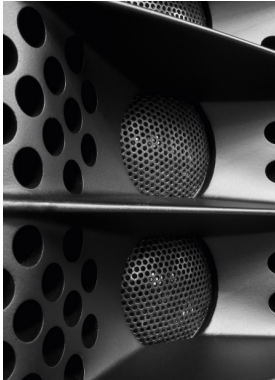
100° horizontal dispersion for good performance in wide venues.



### GL 24 j vertikal - 2D Directivity Plot

The j-curving leads to an unsymmetrical vertical dispersion, narrower in the upper section for long throw and wider in the lower section for near field.



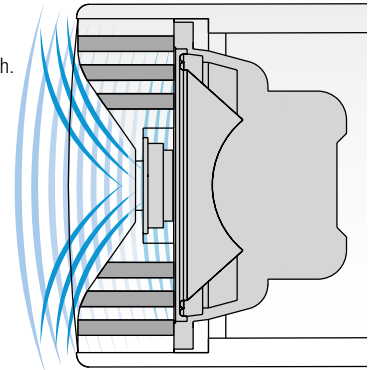


### AMR® Principle.\*

The AMR horn contains integrated channels which allow the sound waves generated by the low-mid speakers mounted behind the horn to pass through.

For sound waves in the frequency range generated by the 1" HF driver, these channels behave as if they were sealed due to the air mass inside the channels acting as a reflector (AMR = Air Mass Reflection).

The low-mid speakers are coupled to an acoustical band pass filter with a center frequency close to the crossover frequency between the Mid and HF drivers. This construction provides smooth horizontal dispersion over a wide frequency range. Another asset is the extreme compactness of this design.



\*patentrechtlich geschützt



Flying Cradle.



GL 24 j dp Connection Panel.



GL 8 i / GL 24 j / GL 8 c



GL 8 i / GL 24 j

**The GL 24 j dp features integrated digital amplifier electronics with a DSP controller. Various factory-configured presets and volume settings can be selected.**

High-grade electronic components from the industrial sector

and a first-class circuit design ensure excellent audio quality with low distortion and a minimal noise floor.

Highly efficient and "intelligent" limiter systems ensure optimum protection against overload, without restricting the possibilities offered by this high-performance sound system.

#### Presets

##### Flat

Standard setting with linear frequency response for stand-alone use.

##### Low (slight)

Slight reduction of low / mid range frequencies for combination with one GL 16 system.

##### Low (strong)

Strong reduction of low / mid range frequencies for combination with several GL 16 systems.

##### HP

120 Hz high pass filter for combination with subwoofers.

#### Level

Adjustment in 3 dB steps (-6 dB to +3 dB).

#### Status

##### Mute LED

Red light when the system is muted or under technically critical conditions.

##### Limit LED

Yellow light when the limiter is restricting the level.

##### Signal LED

Green light when the input signal exceeds -20 dBu

##### Power LED

Green light when the system is switched on.

#### XLR

Symmetrical analog input max. Input +25 dBu. Effective filter protection against HF interference and DC Voltages. Electronically balanced to prevent noise.

## GL 24 dp

Cylindric Wave Radiator

### J - Version

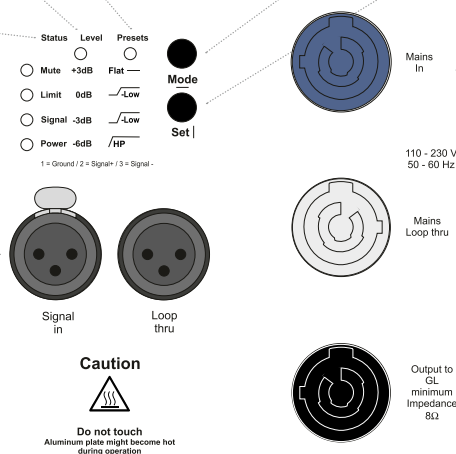
Coverage  
100° x 50°

#### Serial No.:

Power	2x 800 W AES biamped
Input Impedance	10 kΩ
Coverage	100° x 20°
Frequency Range	80 Hz - 20 kHz
Mains Supply	100 - 230 VAC
Weight	22kg



Made in Germany  
www.seeburg.net



#### Mode - key

Switches between control modes Status, Level and Presets.

#### Set - key

Setting of various values and Mute on / off.

#### PowerCon (blue)

Power supply  
~ 110-230 V / 16 A max.

#### PowerCon (grey)

~ 110-230 V / 16 A max.  
loop through connector

#### Speakon NL4MP

Parallel output connection for a passive GL 24 system with an impedance of 8 Ω.

## ACCESSORIES GL 24 j

### Flying Cradle



for GL System,  
max. load 120 kg  
Order No. **01354**

### Flying Bracket



for GL 24,  
incl. (black version: 4 x M10 x 20  
handle screws, white version:  
4 x M10 x 20 socket head screws)  
Order No. **01352/GL24/set/w** (RAL 9010)  
Order No. **01352/GL24/set**

### Handle Screw



for flying brackets, adjustable  
Order No. **08375/20** (M10 x 20)  
Order No. **08375/30** (M10 x 30)

### Clamping Bar



for flying bracket GL 24 / GL 24 j,  
for stronger angling  
Order No. **01352/clamp**

### Quick Trigger Clamp



max. load 100 kg  
Order No. **01223/100 kg**

### Quick Trigger TV Clamp



Max. load 200 kg  
Order No. **01223/TV**

### Ring Screw



M10– DIN 580  
Order No. **73700** (zincd)  
Order No. **73700/sw** (black zincd)

### Shackle



for GL-flying cradle,  
max. load 1000 kg  
Order No. **01372/GL**

### Steel Safety



6 mm x 600 mm, black,  
max. load 22 kg (BGI 810-3),  
quick connector undetachably  
Order No. **01376/6**

### Chain Fastener



VBS 7 mm  
Order No. **01378**

### TV Adapter



M20 external thread,  
28 mm Ø  
Order No. **08128/M20**

### Stretch Cover



for GL 24 / GL 24 j  
Order No. **01233/stretch/black**  
Order No. **01233/stretch/grey**  
Order No. **01233/stretch/white**



TV Adapter -> Flying Bracket